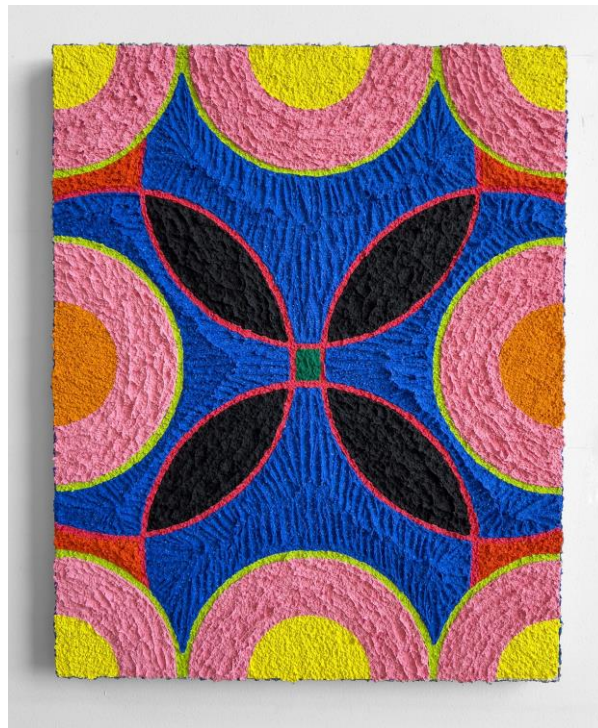


A New Two-Person Solo Exhibition Debuts at Ruiz- Healy

An exhibit featuring colorful works by Gaby Collins-Fernandez and Carlos Rosales-Silva opens this week in Olmos Park

Published: [May 18, 2022](#)



Carlos Rosales-Silva, *Abanico*, 2022, Signed on the reverse, Sand, crushed stone, and glass bead in acrylic paint on panel

Color and texture collide in works on display as part of a new exhibition opening at Ruiz-Healy Art today, May 18.

Artists Gaby Collins-Fernandez and Carlos Rosales-Silva are featured in Applied Pressure, the two-person solo exhibition open at the Olmos Park gallery from May 18 through Aug. 20.

Collins-Fernandez, a New York City-based artist and writer, shares a series of paintings and works on paper that use both bright colors and materials, including crayon, fabric and digital photo collage. Her pieces are abstract and address skin, texture and the potential of surfaces, according to a release from Ruiz-Healy.

The artist says that layering and using multiple elements on one canvas allows the elements to each stand out. “As a strategy, it allows me to equalize categories: color, surface, text, gesture, materials—all function as a kind of language within the work,” Collins-Fernandez said, in a statement.



Gaby Collins-Fernandez, Good Girls, 2021, Initials and date on the reverse, Oil and acrylic paint and photo collage on printed terrycloth

Rosales-Silva's paintings also utilize bright colors and texture, which is incorporated through practices and materials common to sculpture and installation, such as sand, crushed stone and glass beads, the release states.

A former artist-in-residence at Artpace, Rosales-Silva has exhibited throughout Texas and the U.S. and is participant in Brooklyn's Residency Unlimited Program. He says that he uses color and abstraction to address themes like assimilation, tradition and landscape as it relates to the American Southwest and Mexico, where he grew up. "I believe the architecture, landscapes and vernacular cultures of these places are not only beautiful, but unique because they reveal the complex visual histories of colonization that are severely under-recognized in Western art history," he says, in a statement.

An opening reception for the exhibit is planned from 6 to 8 p.m. today. The [gallery can be contacted here](#) for more information.

Applied Pressure

May 18-Aug. 20,

Wednesday-Saturday, 11 a.m.-4 p.m. or by appointment

[Ruiz-Healy Art](#)

201-A E. Olmos Drive